



Top Notch Truss, Co.

THE EWP DIVISION OF SPECIALTY WHOLESALE SUPPLY
 101 Linus Allain Ave. · Gardner, MA · (866)416-3916
 TNT@makicorp.com · www.topnotchtruss.com
 Office Hours: Monday-Friday, 7:30am-4pm

It's not just a truss...it's a *Top Notch Truss*

TNT is proud to be a leader in the design and manufacture of roof trusses up to 60' and floor trusses up to 40'. A Top Notch Truss will meet today's building codes *and* exceed your expectations.

Truss Terms

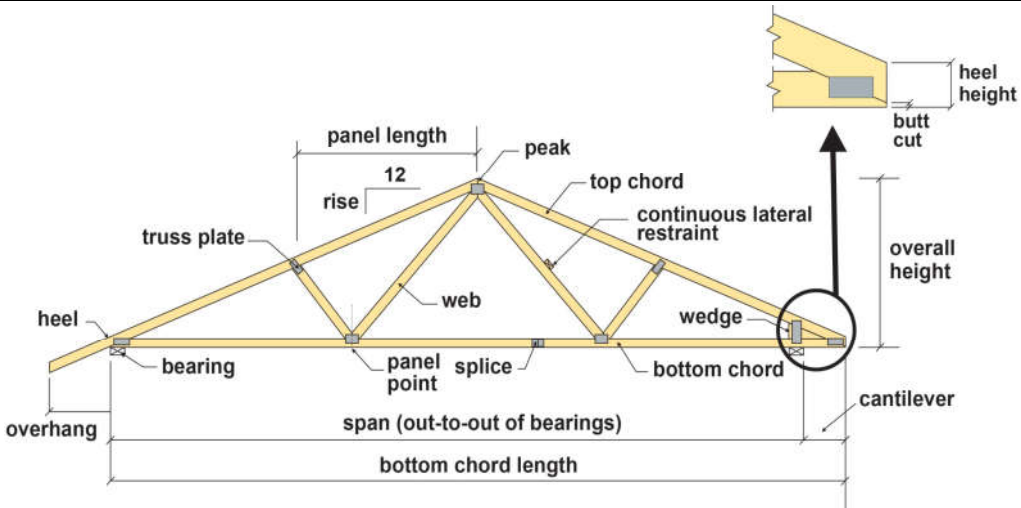


Illustration courtesy of the Structural Building Components Association (SBCA). For more information, visit sbcindustry.com.

Truss Quotes

Need a truss quote? Contact your MAKI Sales Professional or email your plans to TNT@makicorp.com

Please be sure your plans contain the following information:

- | | | |
|---|---|--|
| <ul style="list-style-type: none"> Your Name Job Name Address / City | <ul style="list-style-type: none"> R-Value or Heel Height Top Chord OH or Cantilever length | <ul style="list-style-type: none"> Does it need to be solar-ready? Any changes to the plans, as drawn? |
|---|---|--|

Typical Heel Heights for Trusses with a Top Chord Overhang

Insulation Type	"Energy Heels"		
	R-30	R-38	R-49
Fiberglass Blown	10"	12"	16"
Fiberglass Batt	10"	12"	16"
Open Cell Spray Foam	9"	12"	14"
Closed Cell Spray Foam	5"	7"	9"

Heel Height = the height from the top of the bearing to the top of the top chord *at the end of the bottom chord.*

Check with the building official to determine the energy heel requirement in your town.

Stock Multi-Ply Screws

		2-Ply	3-Ply	4-Ply
	Trusses	FL50278	FL50412	FL506
	LVL	FL50312	FL505	FL50634