

# 1761 WOCD INSTALLATION INSTRUCTIONS

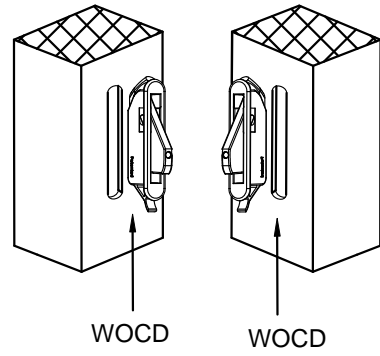
## 1 CONTENTS AND TOOLS

### ⚠ WARNING

1. Follow manufacturer's instructions for hand or power tools. Always wear safety glasses. Failure to do so may result in injury and/or product damage.  
2. Use caution when working at elevated heights and around unit openings. Follow manufacturer's instructions for ladders and/ or scaffolding. Failure to do so may result in injury or death.

#### Tools needed

1. Safety glasses
2. Tape measure



## 2 WOCD INSTALLATION INSTRUCTIONS

**STEP 2.**  
Measure 3.75" up  
from top of  
bottom sash  
and mark  
hole locations

**STEP 3.**  
Insert 1761 into the slot  
with hook underneath  
the vinyl.

**STEP 1.**  
Close and lock  
window

Lock the  
sash

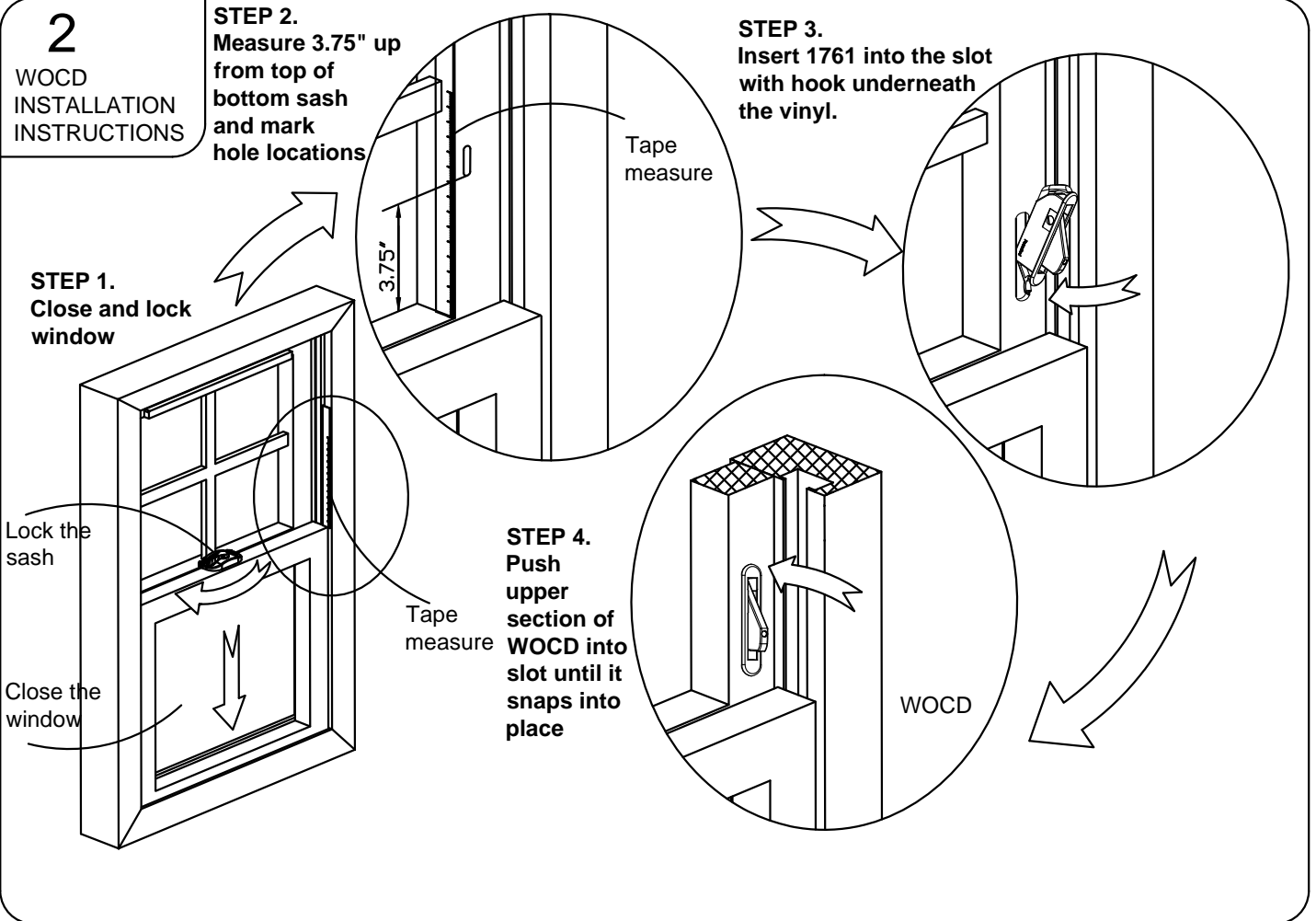
Close the  
window

Tape  
measure

Tape  
measure

**STEP 4.**  
Push  
upper  
section of  
WOCD into  
slot until it  
snaps into  
place

WOCD



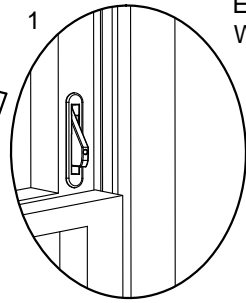
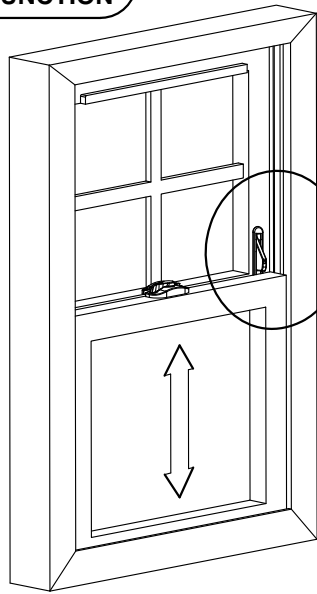
3

**VERIFY  
WOCD  
FUNCTION**



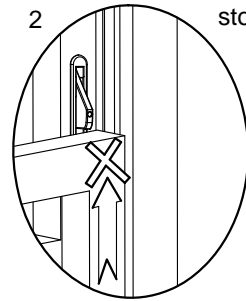
# WARNING

1. Verify correct opening control device operation. Clear opening must be less than 4".
2. WOCD is not a security device that provides intrusion protection.



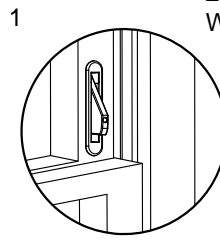
Engage  
WOCD

Raise bottom  
sash -  
WOCD will  
stop it

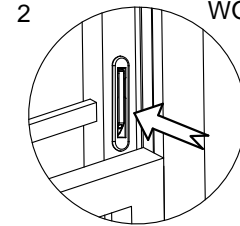


Opening  
must be  
less than  
4"

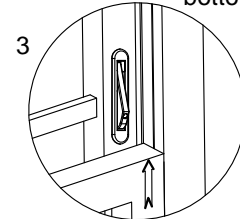
**LESS THAN 4"**



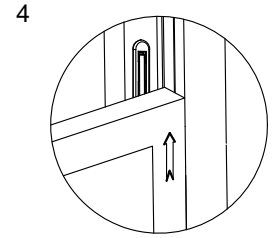
Engage  
WOCD



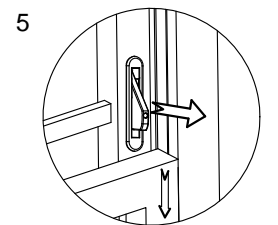
Disengage  
WOCD



Raise  
bottom sash



Tongue of  
WOCD  
retracted in  
housing



Lower bottom sash -  
WOCD will reset