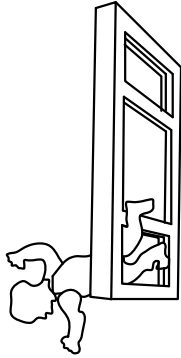


**IMPORTANT SAFETY INFORMATION**  
PLEASE LEAVE SAFETY INFORMATION FOR THE OCCUPANT  
1761 WINDOW OPENING CONTROL DEVICE

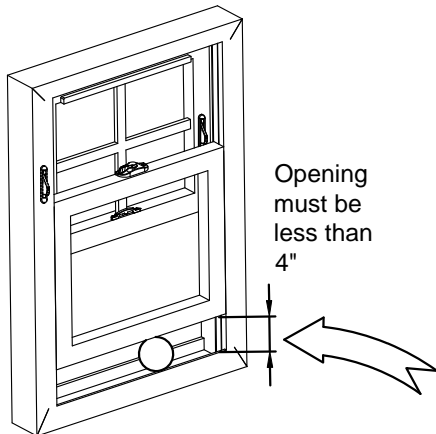


## WARNING

### POSSIBLE FALL HAZARD



1. Follow manufacturer's assembly and installation instructions carefully. Failure to do so may result in accidental falls.
2. This WOCD is designed to protect against accidental window falls by children five years and younger.
3. This WOCD is not a substitute for careful supervision of young children.
4. Keep WOCD engaged unless needed for an emergency.

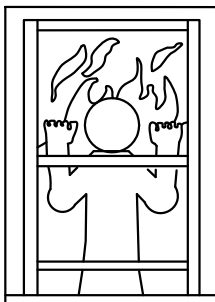


Opening  
must be  
less than  
4"

1. Use only recommended materials & techniques.
2. Make sure WOCD is securely attached to the window.
3. Make sure the window frame is in good condition.
4. Install WOCD so that a rigid sphere 4 inches in diameter cannot pass through the lowest portion of the window opening.

### NO WINDOW RESCUE ABOVE 75 FEET (6th FLOOR)

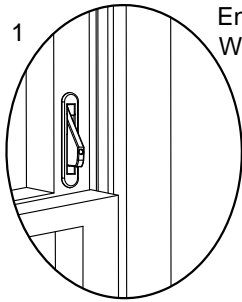
1. Fire rescue ladder may not reach beyond 75 feet (6th floor).
2. Do not rely on being rescued from windows above 75 feet (6th floor) - follow building fire escape plan



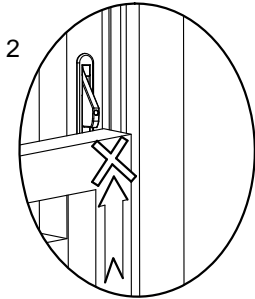
### BLOCKS ESCAPE IN FIRE AND EMERGENCY UNLESS RELEASED

1. Follow enclosed instructions to operate WOCD to open window.
2. Never apply padlocks or devices that require a key or tool to unlock them to the WOCD.

ENGAGE WOCD



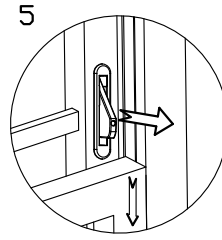
Engage  
WOCD



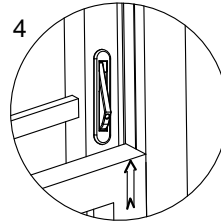
Raise bottom  
sash -  
WOCD will  
stop it



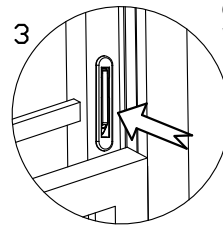
DISENGAGE WOCD



Lower bottom sash -  
WOCD will reset



Raise  
bottom  
sash



Press  
tongue to  
disengage  
WOCD